

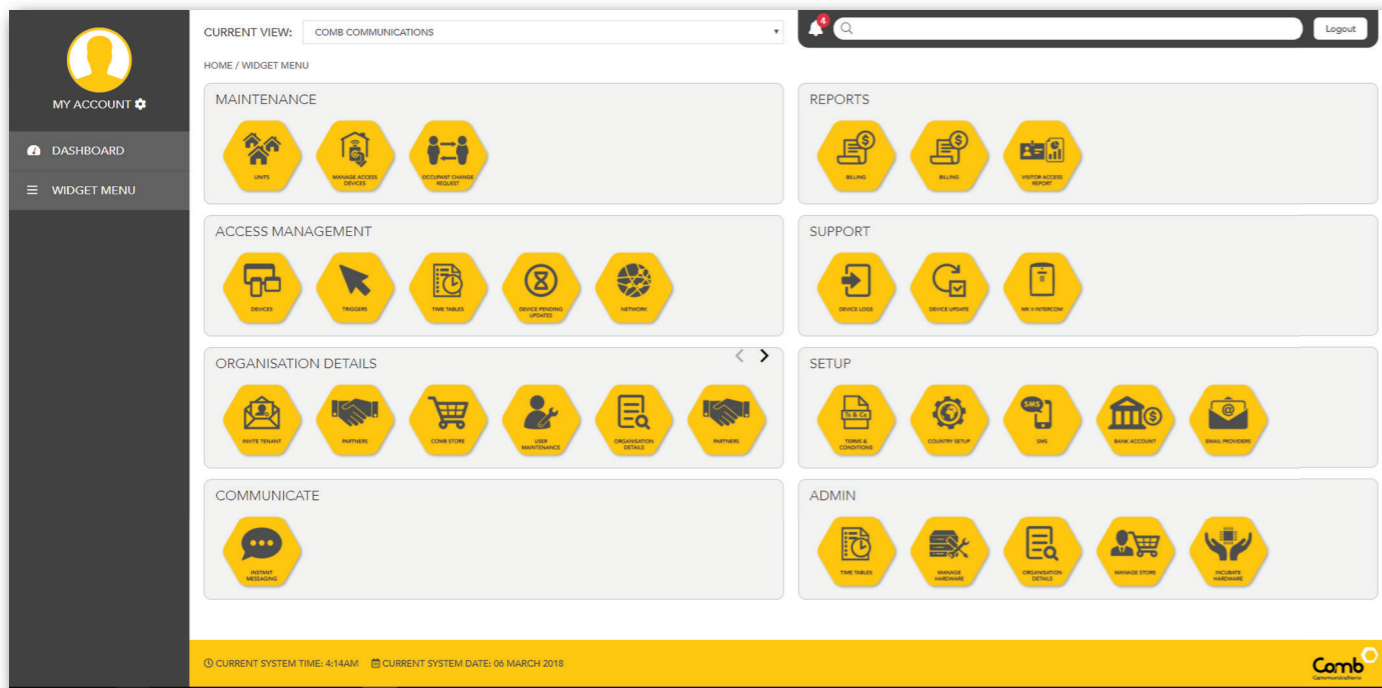
COMMUNICATE

A dedicated facility for outbound communication to persons involved with your organisation/complex.



Instant Messaging (Communicate or Messaging)

The single application for communicating via e-mail or SMS to your audience or individuals.



ADMIN



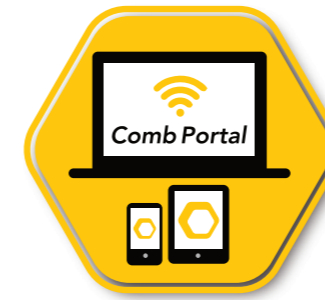
Time Tables

Allocate specific times for access



Manage Hardware

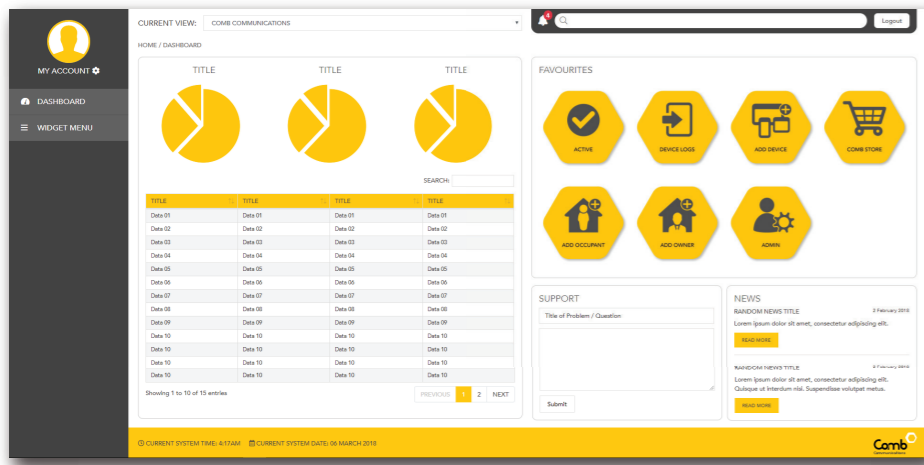
Set-up default relay configuration & intercom display



The Heartbeat of Access and Control

A single comprehensive web based facilities management platform, that integrates with our bespoke hardware and software offerings (*Combware) along with a myriad 3rd party products tailored to suit every access managed eco-system, **Comb Portal** is undeniably the class leading facility management system. From secure log-in to informative dashboards and the ability to customise to your own requirements. The intuitive navigation allows you to drill down on any queries related to specific hardware with exception based reporting. Pull reports, invite users and update information with ease.

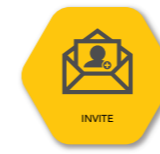




- **Secure Login**
 - **Informative Dashboards**
- Dashboard with important information in a once glance display.

ORGANISATION DETAILS

Edit or update details pertaining to the organisation/complex and the people involved.



Invite
Provide access to the system as part of the organisation, i.e. inviting a new tenant/occupant in the complex.



Partners
Details of partners that provide a service to the complex.



Comb Store
Acquire or renew licenses, purchase Comb Credits or activate new hardware.



User Maintenance
Create, update or remove a user.



Pending Invitations
Create invitation for registration on the system

MAINTENANCE

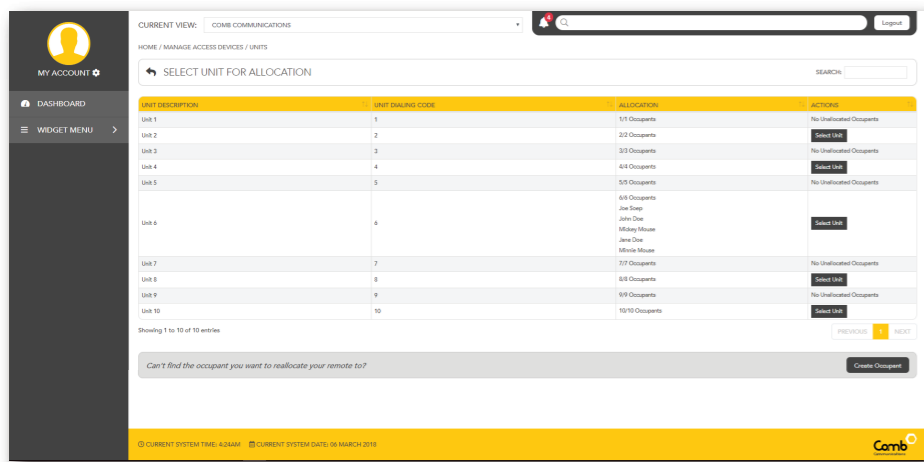
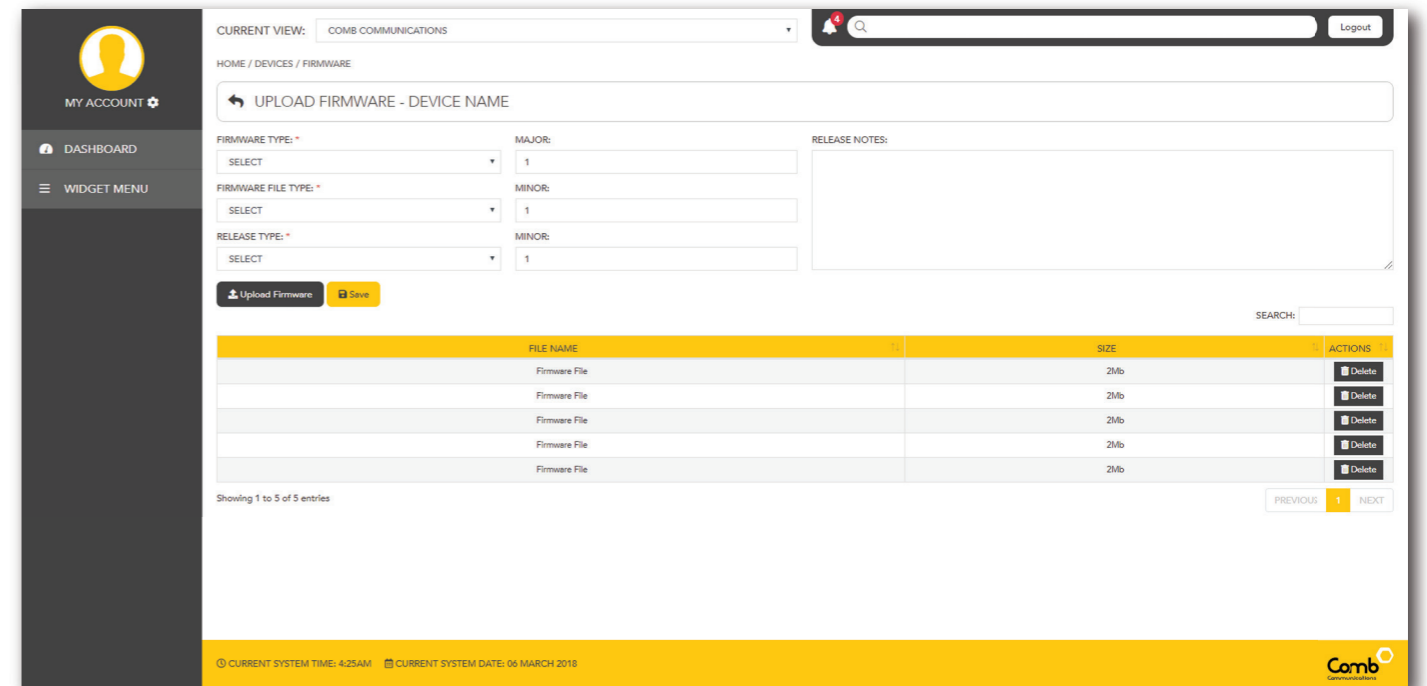
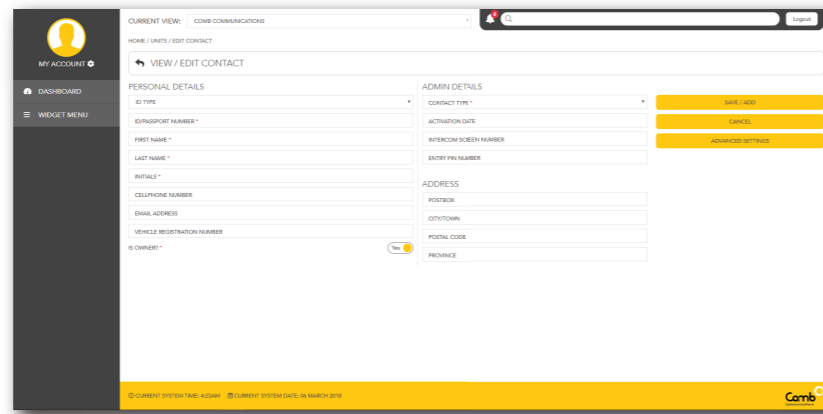
Maintain your organisation/complex with the concise set of options beneath. Related to the people and units involved through to the hardware they rely on.



Units
View and manage (edit, update, load or remove) occupants within the system related to a specific unit.



Manage Access Devices
Once your remotes, RFID tags or similar devices have been purchased and are in the store, allocate them to an individual through this module. Re-allocation may also be done here.



ACCESS MANAGEMENT

Management of all hardware, infrastructure and integrated devices related to access within your organisation.

REPORTS

A central point to pull reports on an array of specific requirements, including your billings, hardware usage and more



Devices
View and manage (edit, link, unlink, review statistics) of all the devices allocated in your system.



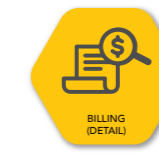
Device Pending Updates
Any changes made to the organisation's data and requires synchronisation with a field device/hardware.



Triggers
Set up triggers for DTMF, Pins, Tap & Tap-ex from here.



Billing Summary
A report displaying total cost per unit for calls made, for the period selected. User input for monthly cost.



Billing Detail
A report displaying total cost per owner/occupant per unit for calls made, for the period selected. User input for monthly cost



Visitor Access Report
A report displaying access type per owner/occupant/domestic per unit, for the period selected.